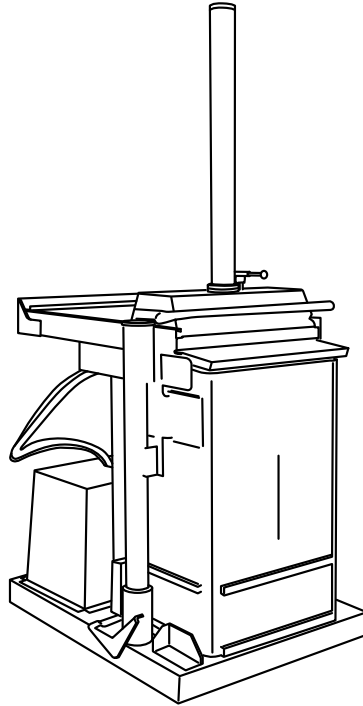


ORWAK 5031 NEW CLASSIC



OPERATING INSTRUCTIONS (IN THE ORIGINAL)

CONTENTS

Safety	2
Operating instructions.....	3
Technical specifications....	4
Dimensional sketch	4
Transport	4
Installation	5
Weekly inspection and maintenance	6
CE.....	7

SAFETY

Please read the operating instructions BEFORE operating the machine.

Our warranty/product responsibility requires that:

- **instructions are followed, and that no conversion or modification is carried out.**
- **original spare parts, and hydraulic oils and lubricants recommended by the machine manufacturer are used.**
- **at least one annual service is carried out.**

The user of the machine is responsible for the safety checks, and for ensuring that daily maintenance of the machine is carried out. The user is responsible for seeing to it that defects are rectified, and that neither the user nor other persons are subjected to danger.

The owner is responsible for ensuring that all laws and instructions are complied with when using the machine.



This symbol means WARNING or DANGER - personal safety instruction!

This machine is designed for **ONE MAN OPERATION**.

Only the operator is allowed in the machine's working area.



The machine must **not** be used if the **safety functions** (e.g. switches and protections) have been deactivated, damaged or removed.



Lost or damaged parts must be replaced with **original spare parts**.



The machine has a **high centre of gravity**. If the machine needs to be moved, the press plate **must** be lowered fully before moving.



Installation and service work may **only** be performed by **qualified and competent** staff, and in accordance with the installation and service instructions.



The machine **must not** be used by minors.



Never climb on the machine.



The machine may only be operated by a person who has received training and has experience of the machine.



Use **both** hands on the handle when moving the press unit forwards or backwards. Do not overfill!

PREMISES

The machine must not be used in areas where there is an increased risk of explosions. Check whether there are any local regulations. The machine may only be used in areas that have a roof, protection against wind and normal lighting.

SAFETY FEATURES

The machine is equipped with the following safety features:

Covers and guards conceal hydraulic lines and movable machine parts. **Limit switches that** prevent compacting when the press plate is not in the compacting position. Gas struts that damp the speed when the waste drum is lowered.

RANGE OF APPLICATION

The press is a hydraulically operated machine intended for compacting voluminous waste such as cardboard, paper or plastic in plastic bags **or** as bales. The machine is intended for use within the temperature range -10°C to +40°C. A low-temperature oil and/or heater should be used at temperatures lower than +5°C.



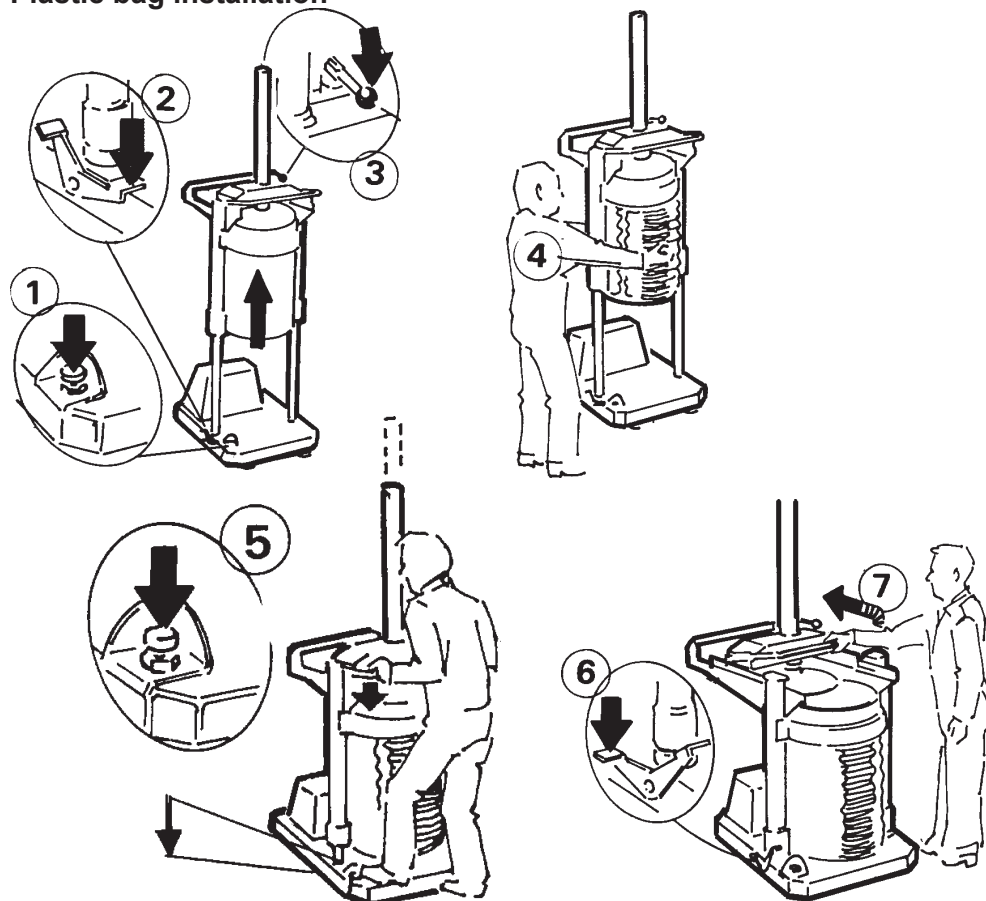
Materials that are **flammable** or of an **explosive** nature, such as pressurised containers or equivalent which, when exposed to pressure or sparks, could cause damage, fire or an explosion, must **not** be compacted in the machine.



Only use straps recommended by the machine **manufacturer**.

OPERATING INSTRUCTIONS - PLASTIC BAGS

Plastic bag installation

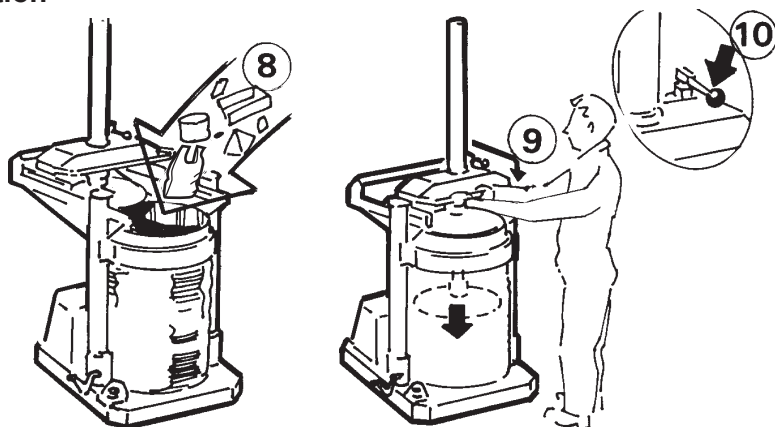


⚠ WARNING!
Only the operator is allowed in the machine's working area!

Plastic bag installation

- 1 Press down the button on the bottom plate for at least two seconds.
- 2 Then press the foot pedal as shown in the picture.
- 3 Press down the lever valve - the drum unit travels up.
- 4 Thread the plastic bag on the outside of the drum.
- 5 Press in the button on the bottom plate again - the drum unit travels down.
- 6 Lock the drum by pressing the foot pedal as shown in the picture.
- 7 Push back the press unit - the machine is ready to use.

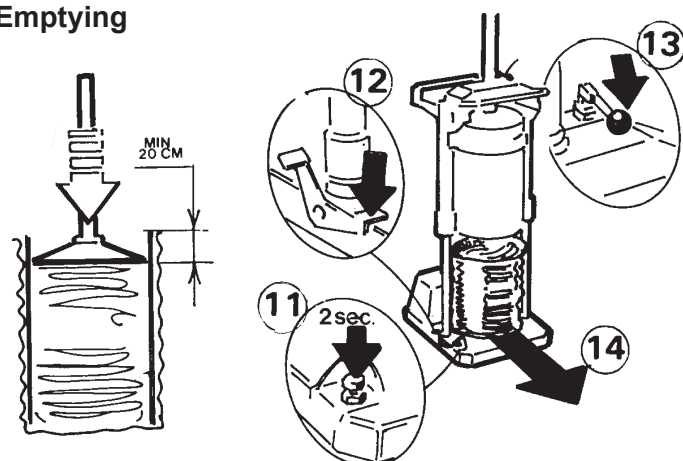
Compaction



Compaction

- 8 Place the waste in the drum.
- 9 Use both hands on the handle and pull the press unit back over the drum.
- 10 Press down the lever valve for the automatic compaction cycle.

Emptying



Emptying

- When there is approximately 20 cm left between the waste and the edge of the drum, it is time for the drum to be emptied:
- 11 Press down the button on the bottom plate for at least two seconds.
 - 12 Then press the foot pedal as shown in the picture.
 - 13 Press the lever valve down - the press plate lowers and, after a while, the drum unit is raised.
 - 14 Tie up the plastic bag and remove it from the bottom plate. Start again from picture 4 above.

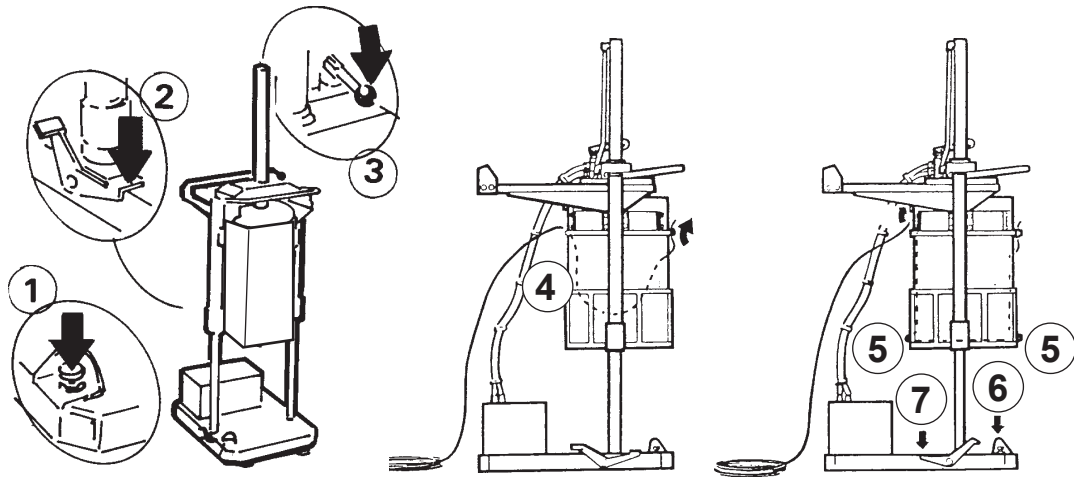
English

OPERATING INSTRUCTIONS - BALES

Mounting the strap



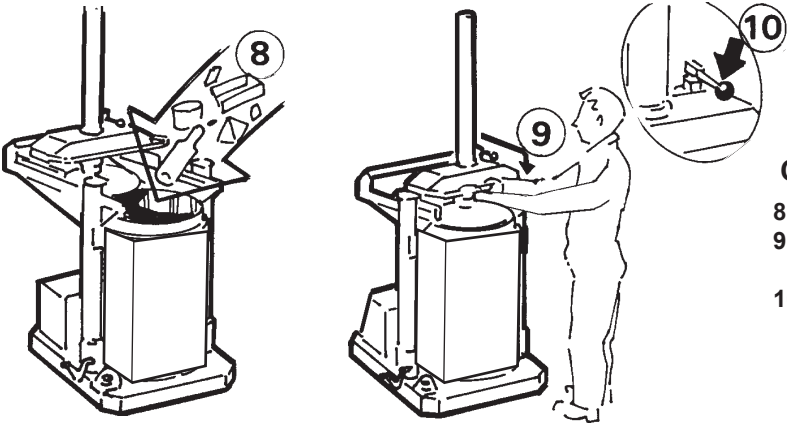
⚠ WARNING!
Only the operator is allowed in the machine's working area!



Mounting the strap

- 1 Press down the button on the bottom plate for at least two seconds.
- 2 Then press the foot pedal as shown in the picture.
- 3 Press down the lever valve - the drum unit travels up.
- 4 Thread the strap as illustrated.
- 5 Ensure that the strap is outside the strap locks.
- 6 Press in the button on the bottom plate again - the drum unit travels down.
- 7 Lock the drum by pressing the foot pedal as shown in the picture.

Compaction

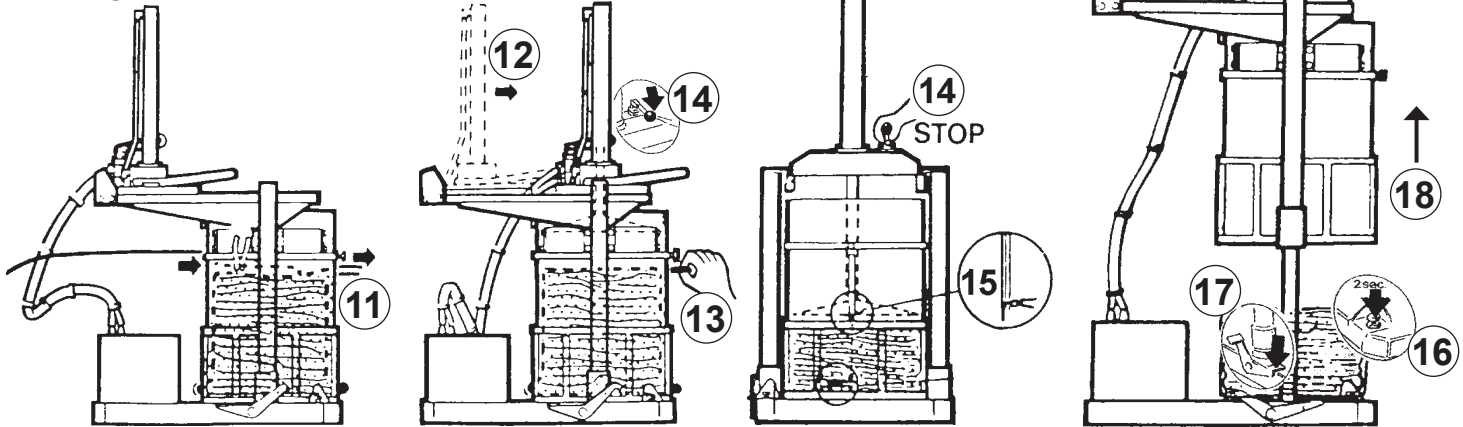


Compaction

- 8 Place the waste in the drum.
- 9 Use both hands on the handle and pull the press unit back over the drum.
- 10 Press down the lever valve for the automatic compaction cycle.

Push back the press unit - the machine is ready to use.

Baling



Baling

- 11 Pull out a piece of strap, pull it over the bale and thread through the front of the chamber.
- 12 Pull forward the press unit over the chamber.
- 13 Hold the strings with one hand to prevent them from travelling back through the slots.
- 14 Hold down the lever valve until the press plate is just about to turn upwards again - turn the lever valve to the middle position (neutral position).

- 15 Tie up the straps at the front of the chamber.
- 16 Press down the button on the bottom plate for at least two seconds.
- 17 Then press the foot pedal.
- 18 Press down the lever valve - the drum unit travels up.

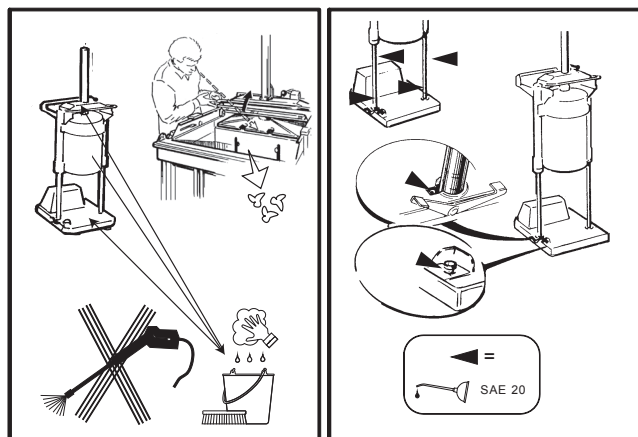
Remove the bale and pull forward new straps in accordance with point 4 and onwards.

WEEKLY INSPECTION AND MAINTENANCE



NOTE! During inspection and maintenance, service work and the removal of trapped waste etc.:

1. Always place the valve lever in the neutral position and disconnect the plug.
2. Do not work inside the machine



SAFETY CHECK

- Check the limit switch and the plastic piston that is actuated by the switch in accordance with the instructions in this service instruction.

- Every time a plastic bag/bale is replaced, check that the two gas struts at the lower end of the telescopic legs damp the speed when the waste drum is lowered.

- Check that no parts are loose or damaged.

- Check that the electrical supply cable is intact and properly protected against impact.

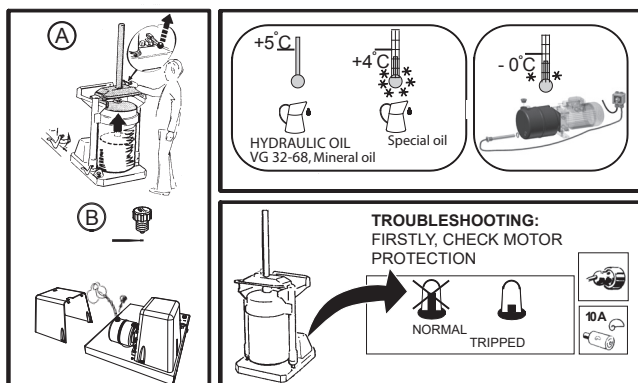
- Contact service personnel immediately if the press plate can be started in any position other than directly above the waste drum.

If any faults are discovered in the functions listed above, the machine must **not** be used until it has been repaired by authorised service personnel.

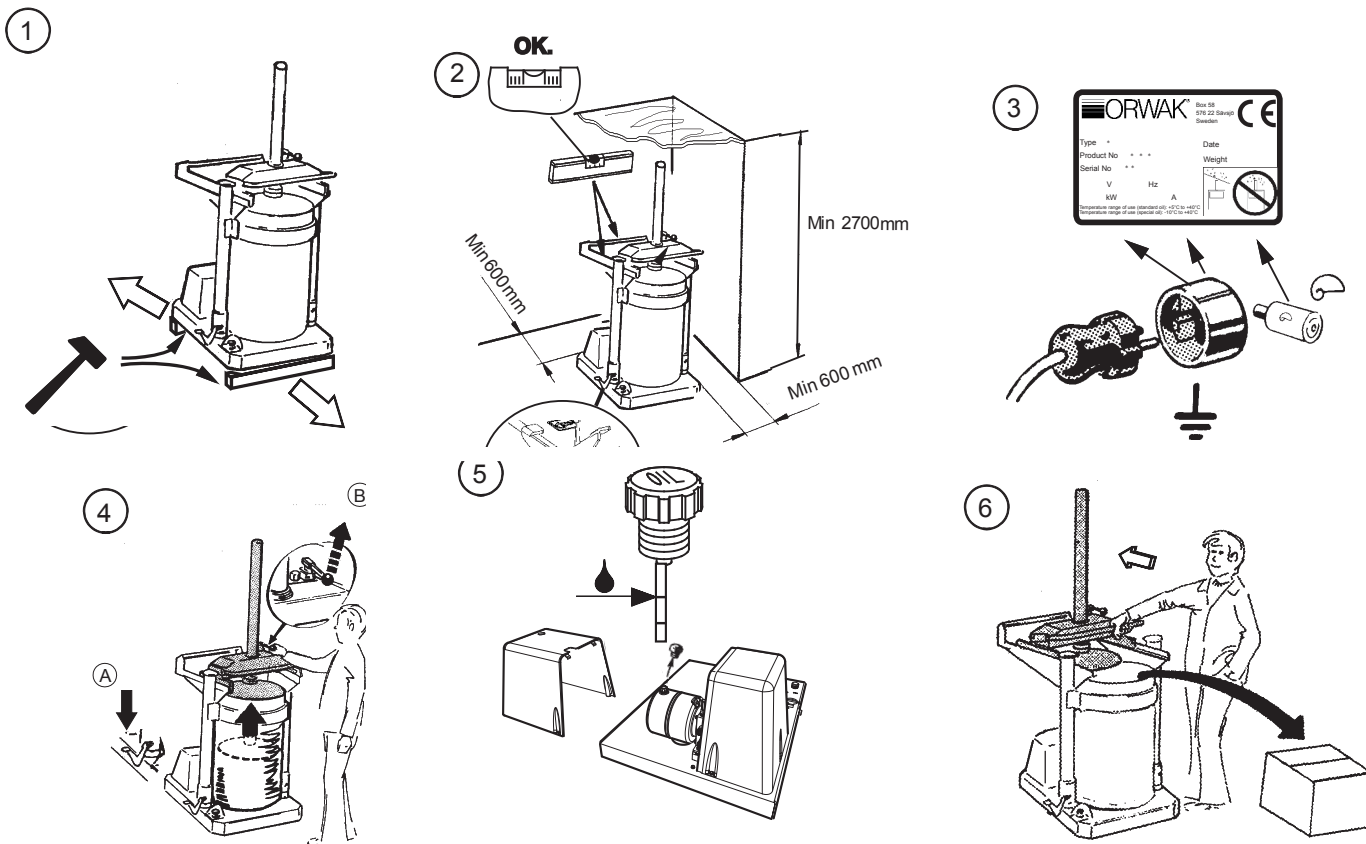
Service and repairs are only to be performed by qualified and competent staff, and in accordance with the machine manufacturer's instructions.



Oil change: Contact the local authorities for advice regarding how to reduce the environmental impact when dealing with residual oil.



INSTALLATION



RECYCLING AND DISPOSAL of THE MACHINE

In the event of the machine being scrapped, the applicable environmental legislation relating to disposal and recycling should be complied with. The machine is mainly constructed of sheet steel. It also contains electrical and hydraulic components, as well as hydraulic oil (the volume of hydraulic oil, in litres, is indicated in the section *Technical specifications*).

English

TECHNICAL SPECIFICATIONS

GENERAL DATA

	5031B	5031C
Total weight:	285 kg	283 kg
Chamber:	207 kg	207 kg
Press unit:	78 kg	76 kg

Dimensions:

Height:	1940 mm	1640 mm
Width:	785 mm	785 mm
Depth:	1033 mm	1033 mm

Recommended floor space for a machine in operation:

Height:	2700 mm	2400 mm
Width:	1935 mm	1935 mm
Depth:	2205 mm	2205 mm

Bale size:

Height:	700 mm
Width:	500 mm
Depth:	500 mm

Loading aperture:

Depth:	500 mm
Width:	500 mm

Noise level: 62 (± 1.0) dB (A)
(ISO 11200 & 11202)

Paint: Two-part paint and powder coat with phosphatising as base.

ELECTRICAL DATA

Operating power:	230 V, 50 Hz
Electric motor:	1.1 kW
Protection class:	IP 55

HYDRAULIC DATA

Working pressure:	110 bar (1600 psi)
Overflow pressure:	140 bar (2030 psi)

Compaction force:

3 tons (30 kN)

Compaction force/cm²: 1.5 kg

Piston stroke: 790 mm

Oil volume: 8.2 L

Recommended hydraulic oil:

+5°C to +60°C:

ISO VG 32-68,

Mineral oil

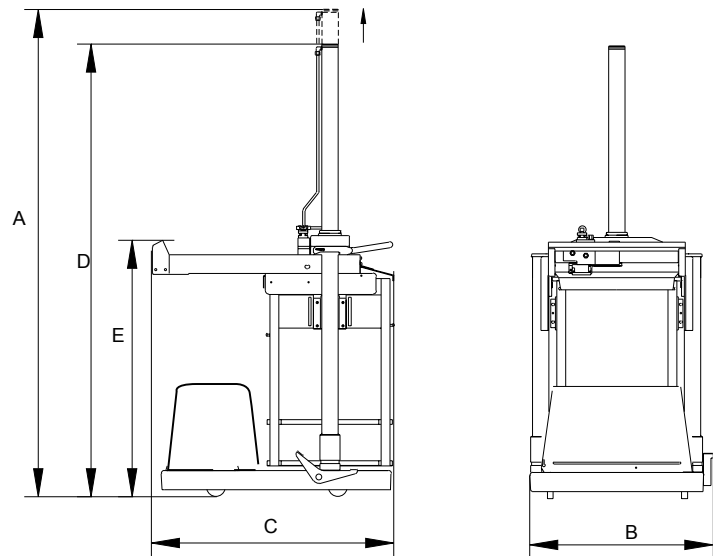
below 5°C:

A special oil or a heater may be needed at lower temperatures.

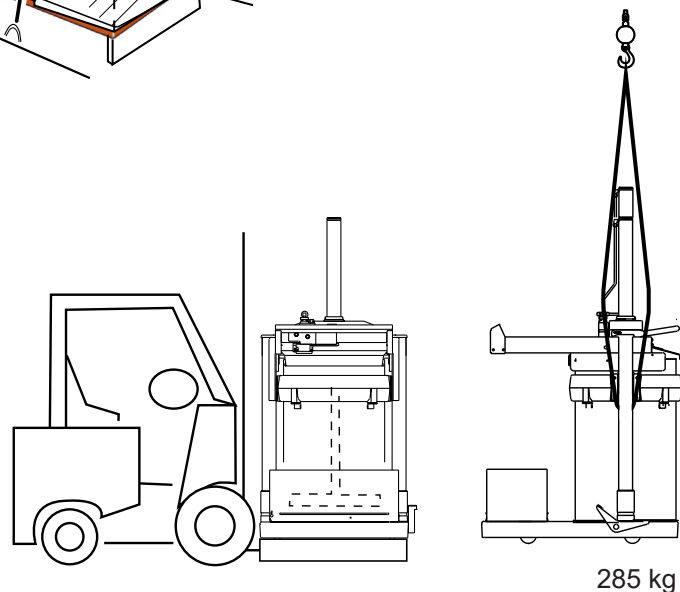
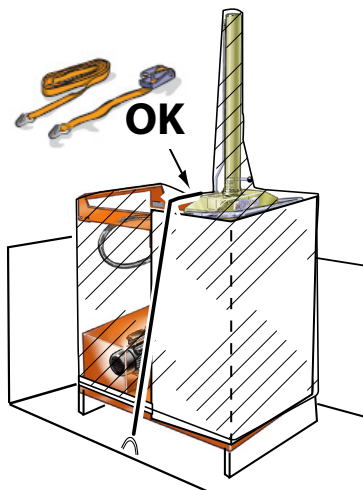
DIMENSIONS

5031B
A=2660 mm
B= 785 mm
C=1033 mm
D=1940 mm
E=1100 mm

5031C
A=2360 mm
B= 785 mm
C=1033 mm
D=1640 mm
E=1100 mm



TRANSPORT



EC DECLARATION OF CONFORMITY



Orwak AB
Svetsaregatan 4
S-576 33 Sävsjö, Sweden
Tel: 46-382-15700

declares under its sole responsibility that the product model

4905031-100 - 4905031-199
4905031-S001 - 4905031-S999

to which this declaration relates is in conformity with the following standards or other normative documents following the provisions of Directive

2006/42/EC (Machinery Directive)
2014/30/EU (EMC Directive)
2011/65/EU (RoHS II)

The machine fulfils the requirements of PL =
c and category 1 according to EN ISO 13849-1

EN 60204-1 (Safety of Machinery – Electrical Equipment of Machines)
EN 61000-6-1 (EMC Immunity for residential, commercial and light-industrial environments)
EN 61000-6-2 (EMC Immunity for industrial environments)
EN 61000-6-3 (EMC Emission standard for residential, commercial and light-industrial environments)
EN 61000-6-4 (EMC Emission standard for industrial environments)
EN ISO 13849-1 (Safety of Machinery – Safety-related parts of control systems)

Sävsjö, 2023-02-28

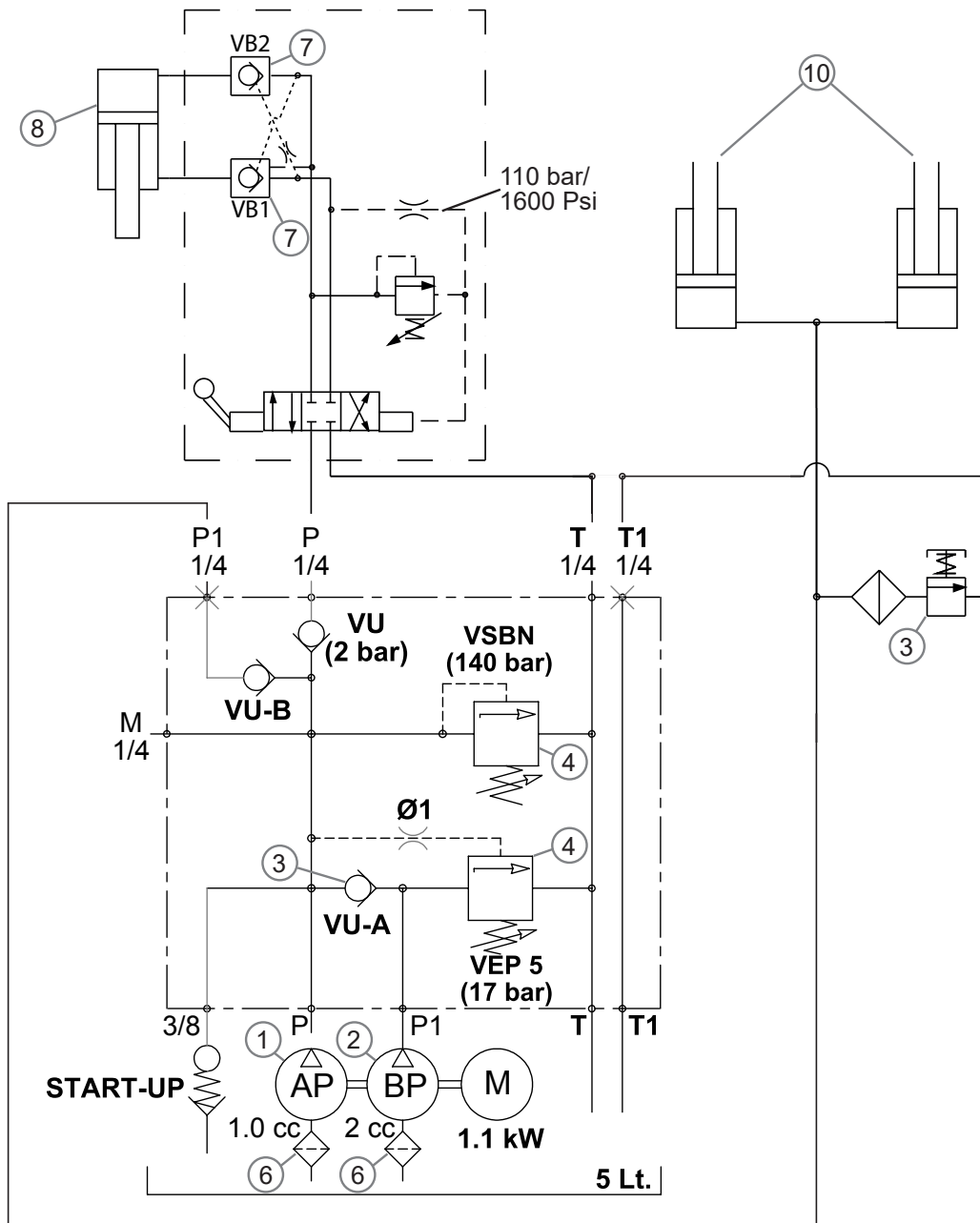
A handwritten signature in blue ink, appearing to read "Philip Karlsson", with a long horizontal stroke extending to the right.

Philip Karlsson

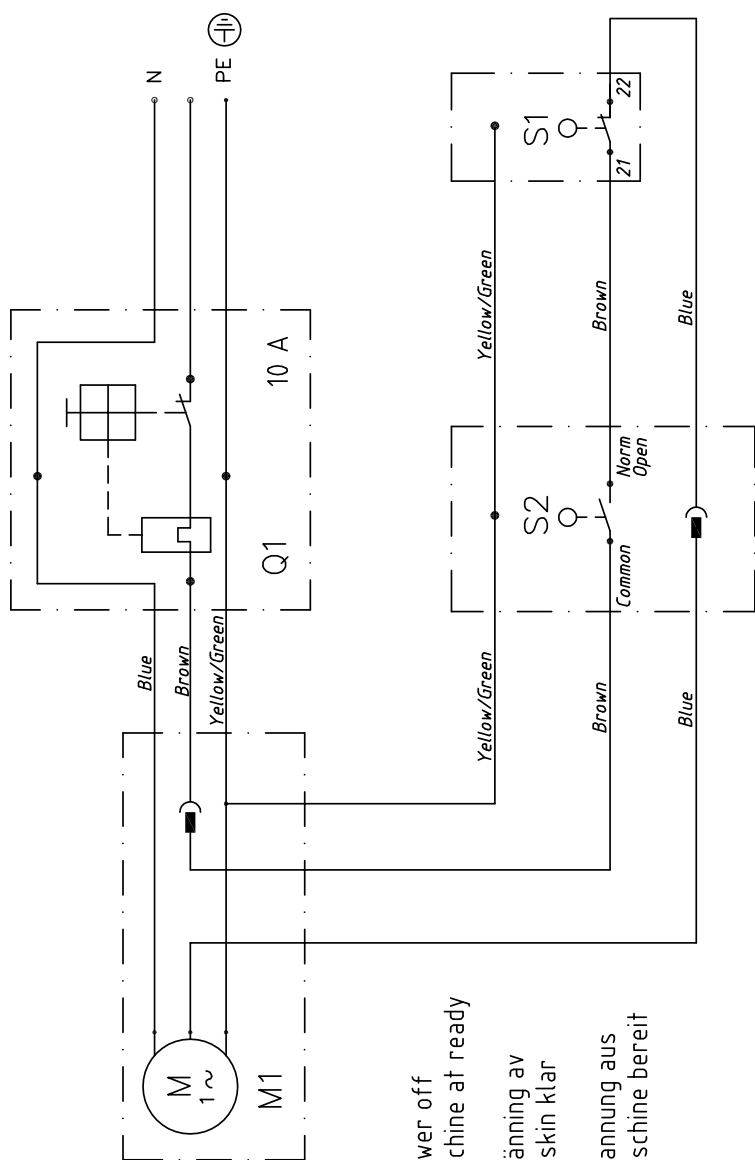
Compiler of technical documentation

HYDRAULIC DIAGRAM

Svenska	English	Deutsch	Français	Español
1 Högtryckspump	Pump high pressure	Hochdruckpumpe	Pompe haute pression	Bomba de alta presión
2 Lågtryckspump	Pump low pressure	Niederdruckpumpe	Pompe basse pression	Bomba de baja presión
3 Backventil	Check valve	Rückschlagventil	Soupape de retenue	Valvula de retención
4 Överströmningsventil	Relief valve	Umgehungsventil	Soupape de décharge	Valvula de derrame
5 Sänkventil	Emptying valve	Entleerungsventil	Soupape de vidange	Valvula de descarga
6 Sugsil	Filter	Saugsieb	Filtre	Filtro
7 Manöverventil	Operating valve	Steuerventil	Soupape de commande	Valvula de mando
8 Presscylinder	Press cylinder	Presszylinder	Verin de compactage	Cilindro de compactación
9 Pilotstyrtd backventil	Nonreturn valve	Rückschlagventil	Soupape de retenue,	Valvula de retención
10 Tömningscylinder	Emptying cylinder	Entleerungszylinder	Verin de vidange	Cilindro hidraulico ensamblado



ELECTRICAL DIAGRAM




Drawing shows: Power off
Maskin klar

Ritningen visar: Spänning av
Maskin klar

Schaltplan zeigt: Spannung aus
Maschine bereit

ELECTRICAL COMPONENT SPECIFICATION/VERZEICHNIS DER ELEKTRISCHEN KOMPONENTENELKOMPONENTENFÖRTECKNING

KOMPONENT	DESCRIPTION/BESCHREIBUNG/BENÄMNING
M1	Motor
Q1	Motor protection device/Motor schutz/Motorskydd
S1	Limit switch / Grenzlageschalter / Gränslägesbrytare
S2	Valve switch / Ventilschalter / Ventilbrytare

Konstr. KG		Ritad NA	Godk.	Applies from serial number	Supersedes dia. no / date
Operating voltage/Arbetsspänning/Driftspänning 230V 50HZ		Product number 4 904 000-00,03,10 4 905 030-00,02,04,06,08		Date 2004-08-26	
Control voltage/Kontrollspänning/Manöverspänning 230V 50HZ		Product number 25,29,32,38,40,47,80 4 905 031-00,02-06,11,13,27,28,36		Diagram number 4 865 221-00	
 BOX 58 516 22 SÄVSJÖ TEL. 0382-15700 TELEFAX 0382-10607		OR 4000/5030,31 Elkraftsschema			

COMPACTION SOLUTIONS FOR MOST TYPES OF WASTE

ORWAK develops solutions for sorting and recycling waste materials that improve business efficiency, contribute to a cleaner working and natural environment to provide the best total waste handling economy.

We offer an innovative range of products that promotes sorting at source and make waste management more profitable.

ORWAK AB
Svetsaregatan 4
S-57622 Sävsjö
SWEDEN
Tel: +46-(0)382-15700
info@orwak.com

ORWAK.COM

 **ORWAK**[®]
PART OF **SULO** GROUP